

As complexity increases, network demarcation devices need to continuously extend their capabilities. Communication service provider need one product family for Ethernet and IP, indoor or outdoor, sophisticated security and highly precise synchronization.

Change is the norm. Today, your business customer wants Ethernet connectivity. Tomorrow, it's IP services. Frequency synchronization is no longer sufficient for your mobile network as time synchronization is mandatory for 4G. Meanwhile, your customers decide that they won't accept unencrypted transmission. The one constant is that requirements keep changing – and at an unprecedented pace. Our FSP 150-GE100Pro series belongs to the successful FSP 150 ProNID family. It enables network operators to offer true multi-service access by combining the demarcation of Carrier Ethernet 2.0 and IP services with a rich set of features in a single device. What's more, there's a range of designs from ultra-compact to rack-mountable devices, all aligned with distinct customer demand. The comprehensive FSP 150-GE100Pro series provides the perfect answer to any demarcation requirement.



Your Benefits

Universal Use

A unique, comprehensive combination of features for future-proof network demarcation.

ADVA ConnectGuard™ Security

Securing traditional leased lines without compromising bandwidth or latency.

Multilayer Technology

Extending Ethernet demarcation with forwarding, filtering and advanced monitoring capabilities for IP traffic.

Timing Excellence

Assured, highly precise frequency-, phase-, and time-synchronization featuring SyncE and IEEE 1588 PTP.






Environmentally Hardened

Different construction practice for rack-mount indoor but also fanless outdoor applications.

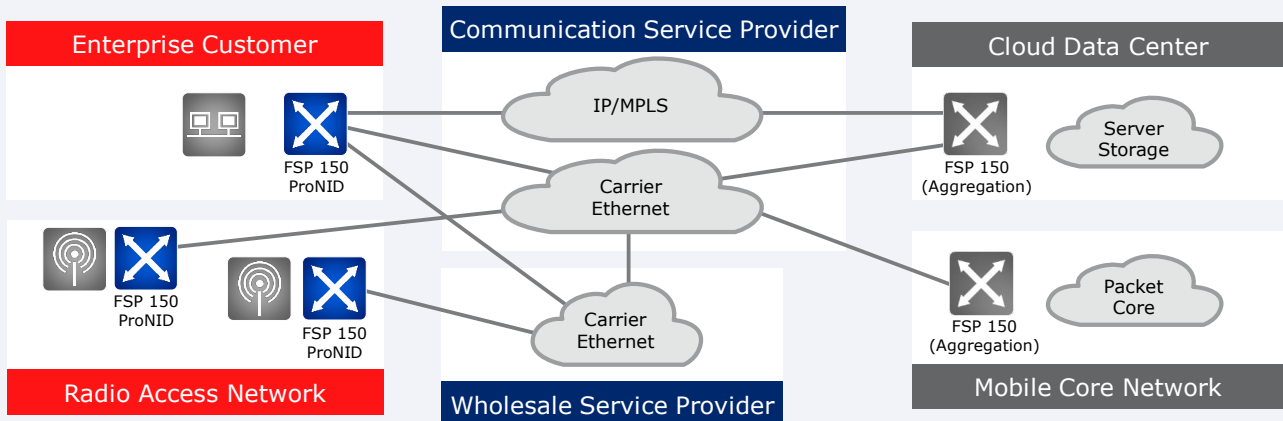
Superior Manageability

Enhancement of sophisticated FSP 150 network management suite with future-proof SDN control and open API.

FSP 150-GE100Pro Series at a Glance

	Product	Key Application
	GE101Pro	Ultra-compact business services and cloud access demarcation device
	GE112Pro (m)	Environmentally hardened Ethernet and IP edge device for mobile networks and business services
	GE112/114Pro	Multi-tenant demarcation device for business services and cloud access
	GE114Pro (C)	Secure business services and cloud access over untrusted connectivity networks
	GE112Pro (H)/ GE114Pro (HE)	Multi-tenant demarcation device for business services and cloud access featuring redundant power supply
	GE114Pro (SH)/(CSH)	Cell site demarcation device featuring assured synchronization delivery and optional encryption

Applications in Your Network



Cloud Access, Business Services and Cell Site Demarcation



- The perfect choice in multi-technology Carrier Ethernet and IP connectivity networks with a unique set of network demarcation features
- Best mobile edge demarcation product featuring environmentally hardened design, minimum space requirements and ultra-low power consumption
- Single product family addressing a wide range of applications and avoiding spiraling cost of multiple sole-purpose devices
- Well prepared for future network architectures with central SDN control in combination with proven, highly reliable network management solution



For more information please visit us at www.advaoptical.com
Data Sheet, version 03/2017

ADVATM
Optical Networking

FSP 150-GE100Pro Series Overview

	Access Capacity (ports)	Network Capacity (ports)	Synch.	Encryption	Operating Temperature	Power Supply	Size	Power Consumption (nominal)
¹ GE101Pro	1xGE	1xGE	-	-	0°C to +45°C	External, AC	Ultra compact	6.5W
² GE112Pro (m)	2xGE	2xGE	SyncE	-	-40°C to +70°C	External, AC or DC	1 RU (H) compact	19W
³ GE112Pro	2xGE	2xGE	SyncE	-	-40°C to +65°C	Integrated, DC or AC	1 RU (H) half width	19W
⁴ GE112Pro (H)	2xGE	2xGE	SyncE	-	-40°C to +65°C	Modular, DC or AC	1 RU (H) full width	21W
⁵ GE114Pro	4xGE	2xGE	SyncE	-	-40°C to +65°C	Integrated, DC or AC	1 RU (H) half width	23W
⁶ GE114Pro (C)	4xGE	2xGE	SyncE		-40°C to +65°C	Integrated, DC or AC	1 RU (H) half width	23W
⁷ GE114Pro (HE)	4xGE	2xGE	SyncE	-	-40°C to +65°C	Modular, DC or AC	1 RU (H) full width	24W
⁸ GE114Pro (SH)	4xGE	2xGE	SyncE, PTP	-	-40°C to +65°C	Modular, DC or AC	1 RU (H) full width	30W
⁹ GE114Pro (CSH)	4xGE	2xGE	SyncE, PTP		-40°C to +65°C	Modular, DC or AC	1 RU (H) full width	30W

Access Capacity

- One¹ 10/100/1000BaseT or 100/1000BaseX (SFP) port
- Two² ports:
 - one dedicated 100/1000BaseX (SFP) port
 - one 10/100/1000BaseT or 100/1000BaseX (SFP) port
- Two^{3,4}/Four⁵⁻⁹ 10/100/1000BaseT or 100/1000BaseX (SFP) ports

Network Interface

- One¹ 10/100/1000BaseT or 100/1000BaseX (SFP) port
- Two² 100/1000BaseX (SFP) ports
- Two³⁻⁹ 10/100/1000BaseT or 100/1000BaseX (SFP) ports
- One network port can be defined as an additional access port²⁻⁹

Network Interface Redundancy²⁻⁹

- IEEE 802.1AX link aggregation – active/standby or load balancing
- ITU-T G.8032 Ethernet ring protection

Synchronization⁸⁻⁹

- ITU-T G.8261/G.8262/G.8264 Synchronous Ethernet on all interfaces
- Sync status message support
- IEEE 1588v2 Precision Time Protocol
- ITU-T G.8265.1 and G.8275.1 PTP Telecom Profile

- BITS-in and BITS-out
- BITS sync status messaging
- 1 PPS in/out
- 10MHz

VLAN Support

- 4096 VLANs (IEEE 802.1Q customer-tagged) and stacked VLANs (Q-in-Q service provider tagged)
- 2-tag management (push/pop/swap) for c-tag and s-tag
- IEEE 802.1ad provider bridging (c-tag, s-tag)
- Ethertype translation
- 8¹/32²⁻⁴/64⁵⁻⁹ Ethernet virtual circuits (EVC)
- 9612 Byte per frame MTU transparency
- EoMPLS encapsulation

Layer 2 Traffic Management

- Acceptable client frame policy: tagged or untagged
- Service classification based on IEEE 802.1p, 802.1Q and IP-TOS/DSCP
- VLAN tag priority mapping (IEEE 802.1ad PCP encoding)
- MEF-compliant policing (CIR/CBS/EIR/EBS) with three-color marking and eight classes of service
- Port shaping on transmit for both client and network ports
- MEF 10.3 hierarchical policing with token-share envelopes
- DiffServ supporting WFQ/SP mix

Layer 3 Traffic Management

- L2-L4 access control lists (ACL) for classification
- VRF-lite virtual routing and forwarding
- DHCP relay agent

Operation, Administration and Maintenance (OAM)

- IEEE 802.3ah EFM-OAM link management
- IEEE 802.1ag connectivity fault management (CFM) with hardware assistance
- ITU-T Y.1731 performance monitoring
- ITU-T Y.1564 service activation testing
- Terminal and facility loopbacks on port- and EVC-level for all interfaces
- Cable diagnostics with benchmarks (electrical interfaces only)
- Embedded RFC 2544 test generator and analyzer (ECPA)
- MEF-compliant Layer 2 control protocol disposition and extensive filter options for Layer 2 packet types
- Link loss forwarding to signal local link and network path failures
- Dying gasp message for power failure alarming (EFM-OAM and SNMP trap option)
- Port mirroring (local and remote)²⁻⁹

Performance Monitoring

- RFC 2819 RMON Etherstats on a per-port and per-service basis
- 15-minute and 1-day performance data bins
- IEEE 802.3ah/ITU-T G.8021 PHY level monitoring
- ITU-T Y.1731 single- and dual-ended frame loss measurement²⁻⁹
- Synthetic frame loss and delay measurement for multi-point service monitoring
- TWAMP sender/reflectors for L3 based service assurance
- Multi-CoS monitoring on EVCs scaling up to 32¹/64²/128³⁻⁹ simultaneous SOAM flows
- Threshold-setting and threshold-crossing alerts
- Physical parameter monitoring for SFP optics, including TCAs
- Temperature monitoring and thermal alarms

ConnectGuard™ Security^{6,9}

- L2 MACsec encryption at line rate on a per-EVC basis
- End-to-end encryption mode with one or two VLAN tags transmitted in the clear
- Robust AES encryption algorithm (AES-128/AES-256)
- Key distribution based on IEEE 802.1X
- Diffie-Hellmann key exchange process (2048/4096 bits)

Product Legend

- ¹ FSP 150-GE101Pro
- ² FSP 150-GE112Pro (m)
- ³ FSP 150-GE112Pro
- ⁴ FSP 150-GE112Pro (H)
- ⁵ FSP 150-GE114Pro
- ⁶ FSP 150-GE114Pro (C)
- ⁷ FSP 150-GE114Pro (HE)
- ⁸ FSP 150-GE114Pro (SH)
- ⁹ FSP 150-GE114Pro (CSH)

- Tamper resistant and evident enclosure
- Full interoperability with all FSP 150 ConnectGuard™-enabled products

Low-Touch Provisioning

- DHCP/BOOTP auto-configuration
- IEEE 802.1x port authentication (supplicant and authenticator)
- Text-based configuration files
- TFTP/SCP for software image upgrade and configuration file copy

Management and Security

Local Management

- Serial connector (RJ45) using CLI²⁻⁹
- Local LAN port (RJ45) using CLI, SNMP and Web GUI interfaces²⁻⁹
- USB¹ (Type B Micro) using CLI
- 3G/LTE/WiFi USB interface

Remote Management

- Maintains in-band VLAN and MAC-based management tunnels
- Fully interoperable with other FSP 150 products

Management Protocols

- IPv4 and IPv6 DCN protocol stacks, including dual-stack operation and 6-over-4 tunnels
- Telnet, SSH (v1/v2), HTTP/HTTPS, SNMP (v1/v2c/v3)
- NETCONF/YANG, OpenFlow

Secure Administration

- Configuration database backup and restore
- System software download via FTP, HTTPS, SFTP or SCP (dual flash banks)
- Remote authentication via RADIUS/TACACS
- SNMPv3 with authentication and encryption
- IPsec on management traffic
- Access control list (ACL)

IP Routing

- DHCP, RIPv2 and static routes, ARP cache access control

System Logging

- Alarm log, audit log and security log

Regulatory and Standards Compliance

- MEF CE 2.0 certified
- IEEE 802.1Q (VLAN), 802.1p (Priority), 802.1ag (CFM), 802.3ah (EFM), 802.1x
- ITU-T Y.1731, G.8010/Y.1306, G.8011.1+2, G.8032²⁻⁹
- MEF-6.1, -9, -10.2, -11, -14, -20, -21, -22.1, -23.1, -25, -26.1, -30, -33, -35, -36
- IETF RFC 2544 (Frame Tests), RFC 2863 (IF-MIB), RFC 2865 (RADIUS), RFC 2819 (RMON), RFC 5357 (TWAMP)
- MEF-compliant ITU-T Y.1564 Service Activation Testing
- ANSI C84.1-1989
- ETSI 300 132-2, BTNR2511, ETS 300-019, ETS 300-019-2-[1,2,3], ETS 300-753²⁻⁹
- NEBS Level 3 certified²⁻⁹
- Telcordia GR-499, GR-63-CORE, SR-332²⁻⁹
- Safety IEC/UL/EN 60950, 21CFR1040.10, EN 60825, EN 50371, EN 300-386, EN 50160, IEC 60320/C14
- EMI EN 300-386, GR-1089-CORE, ETS 300-132, FCC Part 15, Class A²⁻⁹, Class B¹, Industry Canada

Environmental

- Dimensions (W x H x D):
 - 113mm x 38mm x 113mm/4.5" x 1.5" x 4.5"¹ (Ultra-compact chassis)
 - 145mm x 34mm x 152mm/5.7" x 1.3" x 6.0"² (Compact chassis)
 - 220mm x 44mm x 212mm/8.7" x 1.75" x 8.4"^{3,5,6} (1RU half rack-width chassis)
 - 439mm x 44mm x 212mm/17.3" x 1.75" x 8.4"^{4,7-9} (1RU chassis, ETSI compliant)
- Operating temperature:
 - -40°C to +65°C/-40°F to 149°F (hardened environment)
 - 0°C to +40°C/32°F to 104°F (hardened environment)¹
 - -40°C to +70°C/-40°F to 158°F (hardened environment)²
- Storage temperature: -40°C to +70°C/-40°F to 158°F (GR-63-CORE)

Product Legend

- ¹ FSP 150-GE101Pro
- ² FSP 150-GE112Pro (m)
- ³ FSP 150-GE112Pro
- ⁴ FSP 150-GE112Pro (H)
- ⁵ FSP 150-GE114Pro
- ⁶ FSP 150-GE114Pro (C)
- ⁷ FSP 150-GE114Pro (HE)
- ⁸ FSP 150-GE114Pro (SH)
- ⁹ FSP 150-GE114Pro (CSH)

- Humidity: 5 to 95%, B1 (non-condensing)
- Power supply:
 - External 110/240VAC, -48 to -72VDC power adapter^{1,2}
 - Integrated PSU^{3,5,6}/redundant modular hot-swappable PSU^{4,7-9}: 110/240VAC, -48 to -72VDC or +24 to +30VDC with over-voltage and over-current protection
- Power consumption:
 - Nominal: 6.5W¹, 19W^{2,3}, 21W⁴, 23W^{5,6}, 24W⁷, 30W^{8,9}
 - Maximum: 10W¹, 23W^{2,3}, 25W⁴, 28W^{5,6}, 29W⁷, 35W^{8,9}
- Dry-contact environmental alarm inputs⁷