

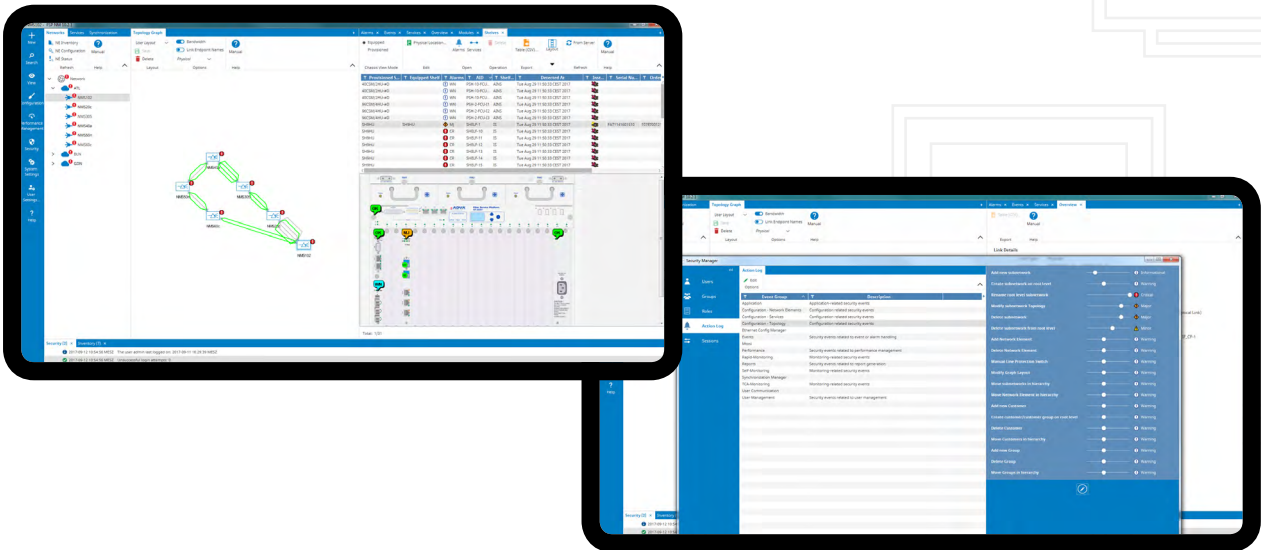


## FSP Network Manager

### Advanced network management solution

Explosive growth in traffic and bandwidth demand is creating bigger and more complex networks that involve an ever-increasing number of network elements and services. Continuous monitoring and fast provisioning are essential to guarantee network performance. Our FSP Network Manager is designed to ease the surveillance and maintenance of your network.

Our FSP Network Manager, part of our advanced network management suite, streamlines operational processes, helps to isolate faults, gathers performance data and delivers comprehensive reporting. Thanks to an intuitive graphical user interface (GUI) and multitude of sorting and filtering options, operational staff can easily and efficiently manage the network, no matter how big or complex it is. With our FSP Network Manager's automated procedures, even tedious and long processes, such as network element backups or software downloads, become child's play.



### Your benefits

- ✓ **Fault monitoring and root cause analysis**  
 Sophisticated sorting and filtering options and root cause analysis simplify fault management and enable quick resolution of problems
- ✓ **Performance management**  
 Collection, storage and display of performance data enable operators to monitor and optimize network quality and ensure SLAs
- ✓ **Automation**  
 Backups, centralized SW downloads and reporting can be scheduled and automated
- ✓ **Northbound interfaces**  
 Integration with other operational support systems (OSS) becomes easy
- ✓ **Comprehensive reporting tools**  
 These provide on-demand or automated fault, inventory, topology, security, performance monitoring and span loss reports
- ✓ **Multi-technology coverage**  
 Optical transport, switching and synchronization of the complete ADVA portfolio can be managed with one tool

## High-level specs

### Visualization

- Intuitive point-and-click GUI
- Network topology view with automatic topology detection
- Photo-realistic shelf display
- Multi-layer service display

### Fault and alarm monitoring

- Automatic synchronization with network elements
- Alarm correlation and filtering
- User-friendly browsing, sorting and filtering
- Trap flood protection

### Data collection and Reporting

- Real time data polling
- Extensive analysis tools
- Various report types and formats
- Data consolidation and exporting

### Security

- Radius and TACACS+ authentication
- Extensive use of secure protocols with encryption
- User activity logging
- Optional four-eyes principle for critical actions

### Housekeeping

- Centralized software download to network elements
- Automatic backup and restore of network element configuration
- Automatic backup of NMS data

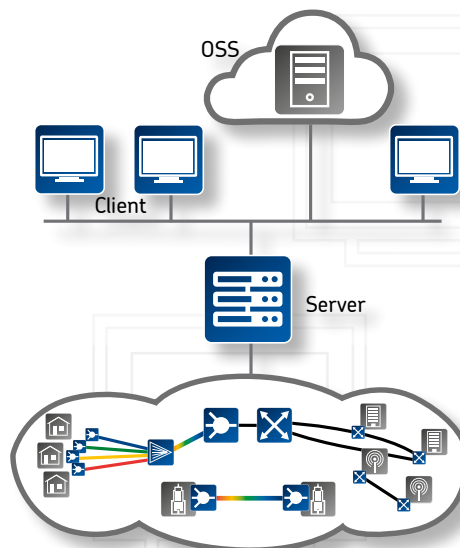
### Operational environment

- Runs on Microsoft Windows and RedHat Linux OS; also on virtualized servers
- Geographically redundant configuration
- Wide range of north-bound interfaces

## Applications in your network

### Advanced management platform for monitoring and assurance

- Centralized visibility and control of network infrastructure
- Accurate information for mission-critical environments such as tier 1 optical backbone systems, mobile backhaul, enterprise networks, financial data centers and synchronization networks
- Integrated cross-layer management view (WDM, OTN, Ethernet, Sync)



For more information please visit us at [www.advaoptical.com](http://www.advaoptical.com)  
© 11 / 2017 ADVA Optical Networking. All rights reserved.

Product specifications are subject to change without notice or obligation.

**ADVA**<sup>TM</sup>  
Optical Networking